

THE FEDERATION OF ST. ALPHEGE CHURCH OF ENGLAND SCHOOLS
GOVERNING BODY STRUCTURE and RESPONSIBILITIES (September 2021)

GOVERNING BODY

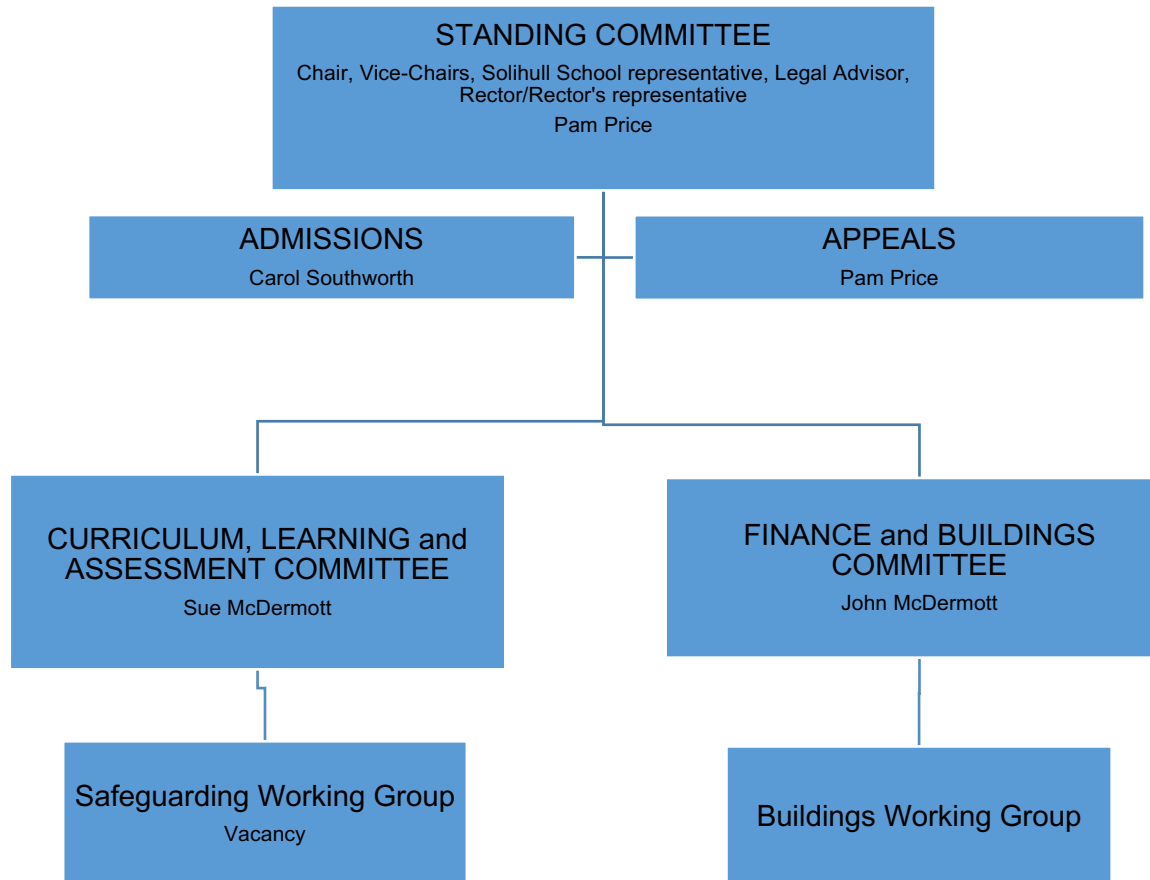
11 Foundation Governors (incl. Rector or Rector's Delegate) 2 Parent Governors 2 Staff Governors (incl. HT), 1 LA Governor, 4 Co-opted

Name	Category	Name	Category
Fr Simon Marshall	Rector or her representative	Vacancy	Solihull School
Pam Price	Diocesan Appointee	Kathryn Clarke	Local Authority
Simon Stanion	Diocesan Appointee	Fiona Smyth	Parent Governor
Catherine Eaton	PCC	Jayne Daw	Parent Governor
Victoria Epplestone	PCC	Rob Morrissey	Headteacher
Meryl Homer	PCC	Jayne McGowan	Staff Governor
Sue McDermott	PCC	Mark Coombs	Co-opted
Carol Southworth	PCC	Liz Hughes	Co-opted
Vacancy	PCC	Karen Young	Co-opted
Vacancy	PCC	John McDermott	Co-opted

THE FEDERATION OF ST. ALPHEGE CHURCH OF ENGLAND SCHOOLS

COMMITTEE STRUCTURE INCLUDING CHAIRS

(reporting to Governing Body)



COMMITTEE	RESPONSIBILITIES
STANDING	Strategic Overview, Corporate Structure, Personnel, Head Teacher Performance, Senior Appointments
CURRICULUM, LEARNING and ASSESSMENT	Learning provision and assessment, Standards, RAISE Online, Safeguarding
FINANCE and BUILDINGS	Financial Management, Budgeting, Buildings, H&S, Lettings
ADMISSIONS	Admissions to Nursery and Infant Schools

COMMITTEE MEMBERSHIP

STANDING and STRATEGIC PLANNING COMMITTEE	Chair and Vice-Chairs, Chairs of Committees, Rector's representative, Solihull School representative, Legal Advisor, Head Teacher
CURRICULUM, LEARNING and ASSESSMENT	Sue McDermott (Chair), Kathryn Clarke, Mark Coombs, Catherine Eaton, Meryl Homer, Rob Morrissey, Pam Price, Carol Southworth
FINANCE and BUILDINGS	John McDermott (Chair), Jayne Daw, Victoria Epplestone, Liz Hughes, Rob Morrissey, Pam Price, Fiona Smyth, Carol Southworth
ADMISSIONS	Carol Southworth (Chair), Meryl Homer, Fr Simon, Rob Morrissey, Pam Price.
APPEALS/COMPLAINTS	Pam Price (Chair), Carol Southworth, Simon Stanion (other members if required to form an independent panel)

The Federation of St. Alphege Church of England Schools – Governor Committee responsibilities

Name	Category	Committee Responsibilities
Vacancy	Solihull School	
Kathryn Clarke	Local Authority	Curriculum, Learning & Assessment
Mark Coombs	Co-opted	Curriculum, Learning and Assessment,
Jayne Daw	Parent Governor	Finance and Buildings
Catherine Eaton	PCC	Curriculum, Learning & Assessment
Victoria Epplestone	PCC	Finance and Buildings
Meryl Homer	PCC	Admissions; Curriculum, Learning and Assessment
Karen Young	Co-opted	
Liz Hughes	Co-opted	Finance and Buildings
John McDermott Vice-Chair	Co-opted	Chair Finance and Buildings; Standing
Sue McDermott	PCC	Standing: Chair Curriculum, Learning and Assessment.
Jayne McGowan	Staff Governor	
Father Simon Marshall	Rector's delegate	Standing, Admissions
Rob Morrissey	Headteacher	All committees
Pam Price Chair	Diocesan Appointee	Attends all committees as appropriate
Fiona Smyth	Parent Governor	Finance and Buildings
Carol Southworth Vice-Chair	PCC	Standing; Curriculum, Learning and Assessment; Chair Admissions.
Simon Stanion	Diocesan Appointee	Standing; Appeals
Vacancy	PCC	
Vacancy	PCC	

The Federation of St. Alphege Church of England Schools – Governor Curriculum Team Link/Liaison Responsibilities

Name	Category	Curriculum Team Link Liaison Responsibilities
Vacancy	Solihull School	
Kathryn Clarke	Local Authority	Science, Maths & Science Team
Mark Coombs	Co-opted	English Team
Jayne Daw	Parent Governor	
Catherine Eaton	PCC	Humanities Team
Victoria Epplestone	PCC	
Meryl Homer	PCC	Early Years Team Literacy; FSAS
Karen Young	Co-opted	
Liz Hughes	Co-opted	Maths & Science Team, Buildings
John McDermott	Co-opted	Maths & Science Team, Pupil Premium
Sue McDermott	PCC	English Team, Numeracy
Jayne McGowan	Staff Governor	
Father Simon Marshall	Rector's delegate	RE and Worship Team; Pastoral care; PSHE
Rob Morrissey	HT - Staff Governor	
Pam Price	Diocesan Appointee	Humanities Team Headteacher liaison; Ofsted; Parents' Councils; Skills Audit; Child Protection; Safeguarding
Fiona Smyth	Parent Governor	Maths & Science Team
Carol Southworth	PCC	Personal Development Team Extra-Curricular; SEND
Simon Stanion	Diocesan Appointee	Legal advice/support
Vacancy	PCC	
Vacancy	PCC	