

THE FEDERATION OF ST. ALPHEGE CHURCH OF ENGLAND SCHOOLS
GOVERNING BODY STRUCTURE and RESPONSIBILITIES (January 2020)

GOVERNING BODY

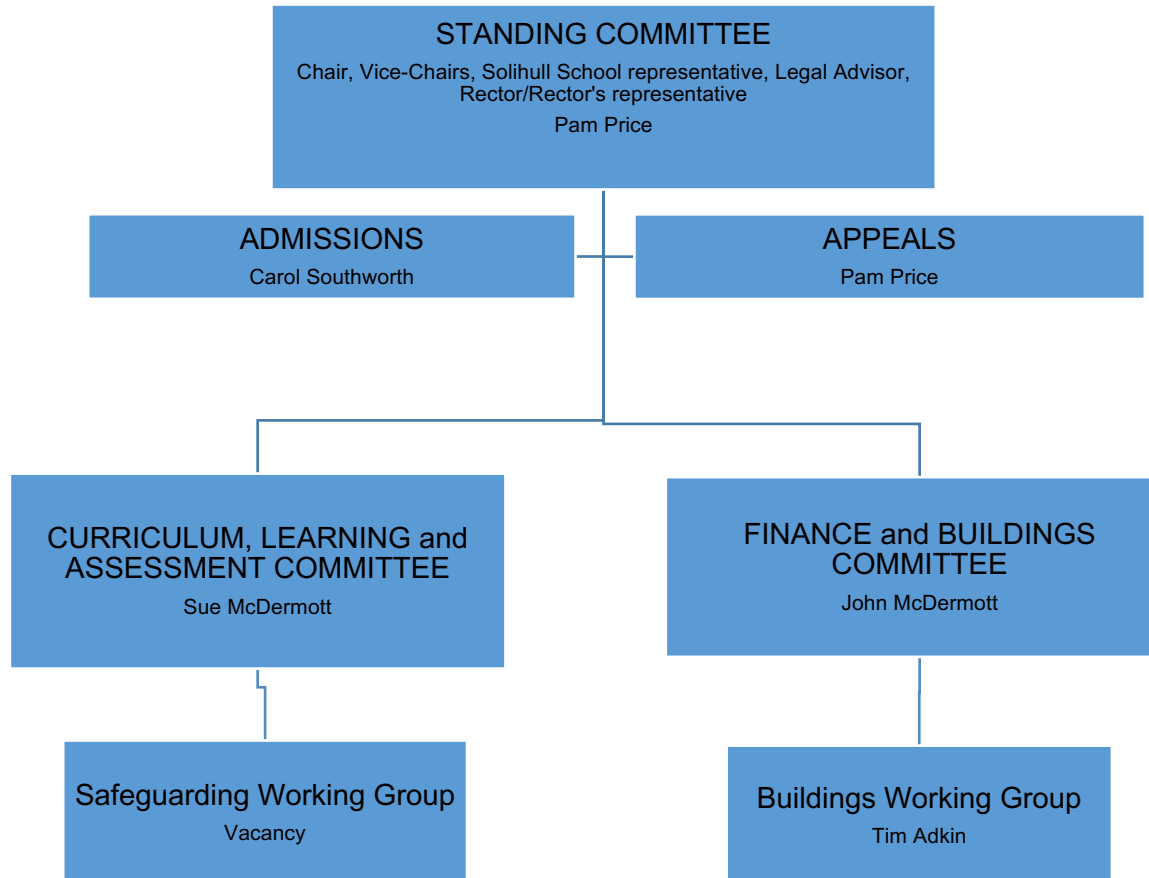
11 Foundation Governors (incl. Rector or Rector's Delegate) 2 Parent Governors 2 Staff Governors (incl. HT), 1 LA Governor, 4 Co-opted

Name	Category	Name	Category
Fr Simon Marshall	Rector or her representative	Tim Adkin	Solihull School
Pam Price	Diocesan Appointee	Syeda Choudhury	Local Authority (tbc)
Simon Stanion	Diocesan Appointee	Fiona Smyth	Parent Governor
Catherine Eaton	PCC	Jayne Daw	Parent Governor
Jenny Eaton	PCC	Rob Morrissey	Headteacher
Meryl Homer	PCC	Vacancy	Staff Governor
Andrew Iles	PCC	Mark Coombs	Co-opted
Sue McDermott	PCC	Rosemary Hope	Co-opted
Carol Southworth	PCC	Liz Hughes	Co-opted
Vacancy	PCC	John McDermott	Co-opted

THE FEDERATION OF ST. ALPHEGE CHURCH OF ENGLAND SCHOOLS

COMMITTEE STRUCTURE INCLUDING CHAIRS

(reporting to Governing Body)



COMMITTEE	RESPONSIBILITIES
STANDING	Strategic Overview, Corporate Structure, Personnel, Head Teacher Performance, Senior Appointments
CURRICULUM, LEARNING and ASSESSMENT	Learning provision and assessment, Standards, RAISE Online, Safeguarding
FINANCE and BUILDINGS	Financial Management, Budgeting, Buildings, H&S, Lettings
ADMISSIONS	Admissions to Nursery and Infant Schools

COMMITTEE MEMBERSHIP

STANDING	Chair and Vice-Chairs, Chairs of Committees, Rector's representative, Solihull School representative, Legal Advisor, Head Teacher
STRATEGIC PLANNING COMMITTEE	Andrew Iles (Chair), Standing Committee Members plus Liz Hughes and Catherine Eaton
CURRICULUM, LEARNING and ASSESSMENT	Sue McDermott (Chair), Mark Coombs, Jenny Eaton, Meryl Homer, Rob Morrissey, Pam Price, Carol Southworth
FINANCE and BUILDINGS	John McDermott (Chair), Tim Adkin, Jayne Daw, Liz Hughes, Rob Morrissey, Pam Price, Fiona Smyth, Carol Southworth
ADMISSIONS	Carol Southworth (Chair), Meryl Homer, Fr Simon, Rob Morrissey, Pam Price. Revd. Jane Kenchington to attend when appropriate.
APPEALS/COMPLAINTS	Pam Price (Chair), Jenny Eaton, Carol Southworth, Simon Stanion (other members if required to form an independent panel)

The Federation of St. Alphege Church of England Schools – Governor Committee responsibilities

Name	Category	Committee Responsibilities
Tim Adkin	Solihull School	Standing; Finance and Buildings.
Syeda Choudhury	Local Authority (TBC)	Strategic Planning
Mark Coombs	Co-opted	Curriculum, Learning and Assessment, Strategic Planning
Jayne Daw	Parent Governor	Finance and Buildings
Catherine Eaton	PCC	Strategic Planning.
Jenny Eaton	PCC	Appeals; Curriculum, Learning and Assessment
Meryl Homer	PCC	Admission; Curriculum, Learning and Assessment
Rosemary Hope	Co-opted	
Liz Hughes	Co-opted	Finance and Buildings; Strategic Planning
Andrew Iles	PCC	Standing; Strategic Planning
John McDermott Vice-Chairman	Co-opted	Chairs Finance and Buildings; Standing
Sue McDermott	PCC	Standing; Chairs Curriculum, Learning and Assessment.
Father Simon Marshall	Rector's delegate	Standing. Admissions
Rob Morrissey	Headteacher	All committees
Pam Price Chairman	Diocesan Appointee	Attends all committees as appropriate
Fiona Smyth	Parent Governor	Finance and Buildings
Carol Southworth Vice-Chairman	PCC	Standing; Curriculum, Learning and Assessment; Chairs Admissions.
Simon Stanion	Diocesan Appointee	Standing; Appeals
Vacancy	Staff Governor	
Vacancy	PCC	

The Federation of St. Alphege Church of England Schools – Governor Curriculum Team Link/Liaison Responsibilities

Name	Category	Curriculum Team Link Liaison Responsibilities
Tim Adkin	Solihull School	Maths & Science Team; Humanities Team Buildings; H&S
Syeda Choudhury	Local Authority (TBC)	
Mark Coombs	Co-opted	English Team
Jayne Daw	Parent Governor	
Catherine Eaton	PCC	Humanities Team
Jenny Eaton	PCC	Personal Development Team Health Issues
Meryl Homer	PCC	Early Years Team Literacy; FSAS
Rosemary Hope	Co-opted	
Liz Hughes	Co-opted	Maths & Science Team Buildings
Andrew Iles	PCC	Humanities Team ICT
John McDermott	Co-opted	Maths & Science Team Pupil Premium
Sue McDermott	PCC	English Team Numeracy
Father Simon Marshall	Rector's delegate	RE and Worship Team; Pastoral care; PSHE
Rob Morrissey	HT - Staff Governor	
Pam Price	Diocesan Appointee	Humanities Team Headteacher liaison; Ofsted; Parents' Councils; Skills Audit; Child Protection; Safeguarding
Fiona Smyth	Parent Governor	Maths & Science Team
Carol Southworth	PCC	Personal Development Team Extra-Curricular; SEND
Simon Stanion	Diocesan Appointee	Legal advice/support
Vacancy	Staff Governor	
Vacancy	PCC	